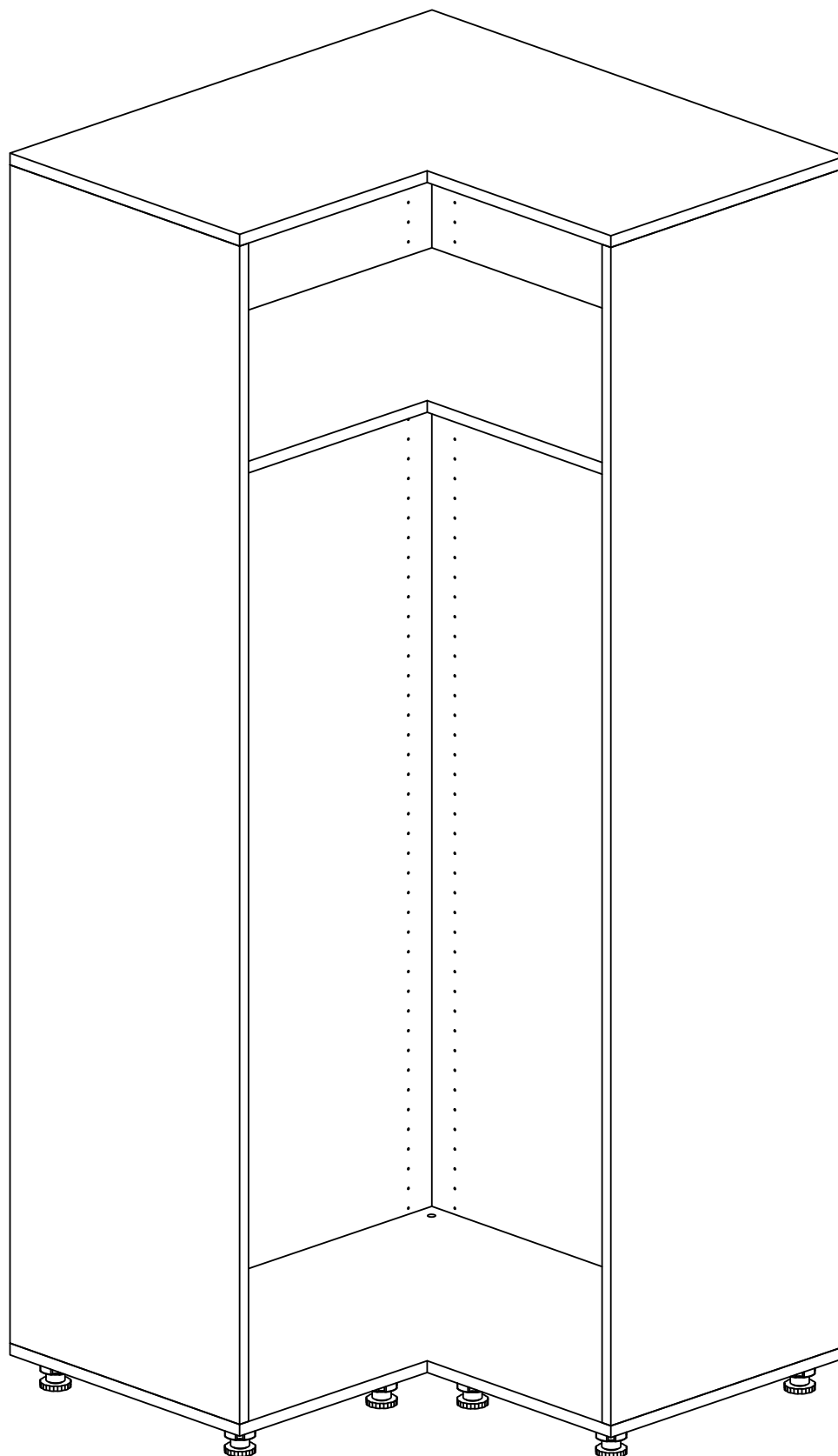


MODULE D'ANGLE



INFORMATIONS

Ce document est une notice regroupant les informations nécessaires aux différentes étapes de montage du produit **Module d'angle**

Vous pouvez retrouver cette notice sur notre site internet.

IMPORTANT

Nous vous conseillons d'être au minimum 2 personnes pour le montage de nos produits.

Aucune visserie n'est fournie pour la fixation au mur, au sol, ou au plafond. Il vous faudra vous adapter à votre support.

CONSEIL D'ENTRETIEN

Panneaux mélaminés mat ou structuré :

A l'aide d'une éponge humide savonneuse. Rincer à l'eau claire après le nettoyage, puis sécher correctement avec un chiffon propre.

Si l'eau ne suffit pas, vous pouvez utiliser du produit nettoyant pour vitres.



Ne pas utiliser de produits abrasifs, ni de produits à base forte et acide fort.

ECO-MOBILIER



N° REGISTRE FR019580_103YUI

N° REGISTRE FR019580_04FIWL



FR

Pensez à
donner ou recycler.



Association

ou



Magasin

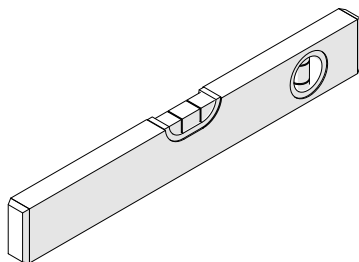
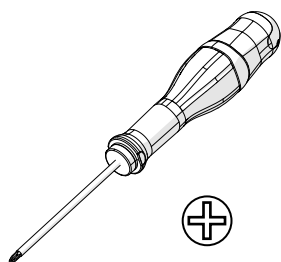
ou



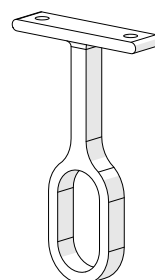
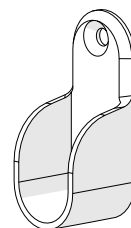
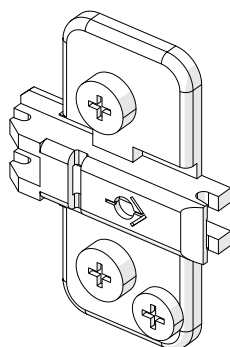
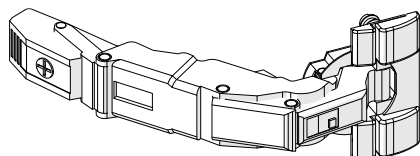
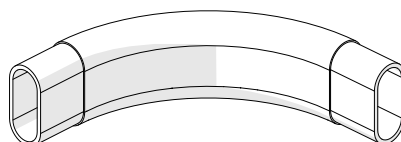
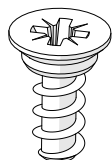
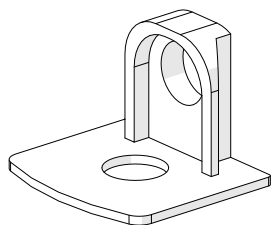
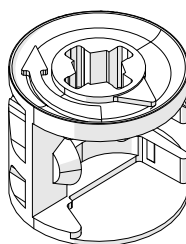
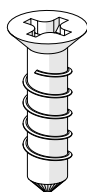
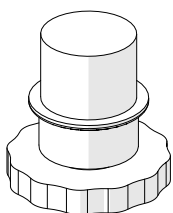
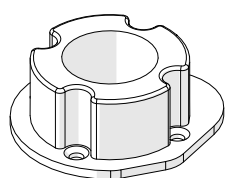
Déchèterie

<https://quefairedemesdechets.fr>

OUTILS



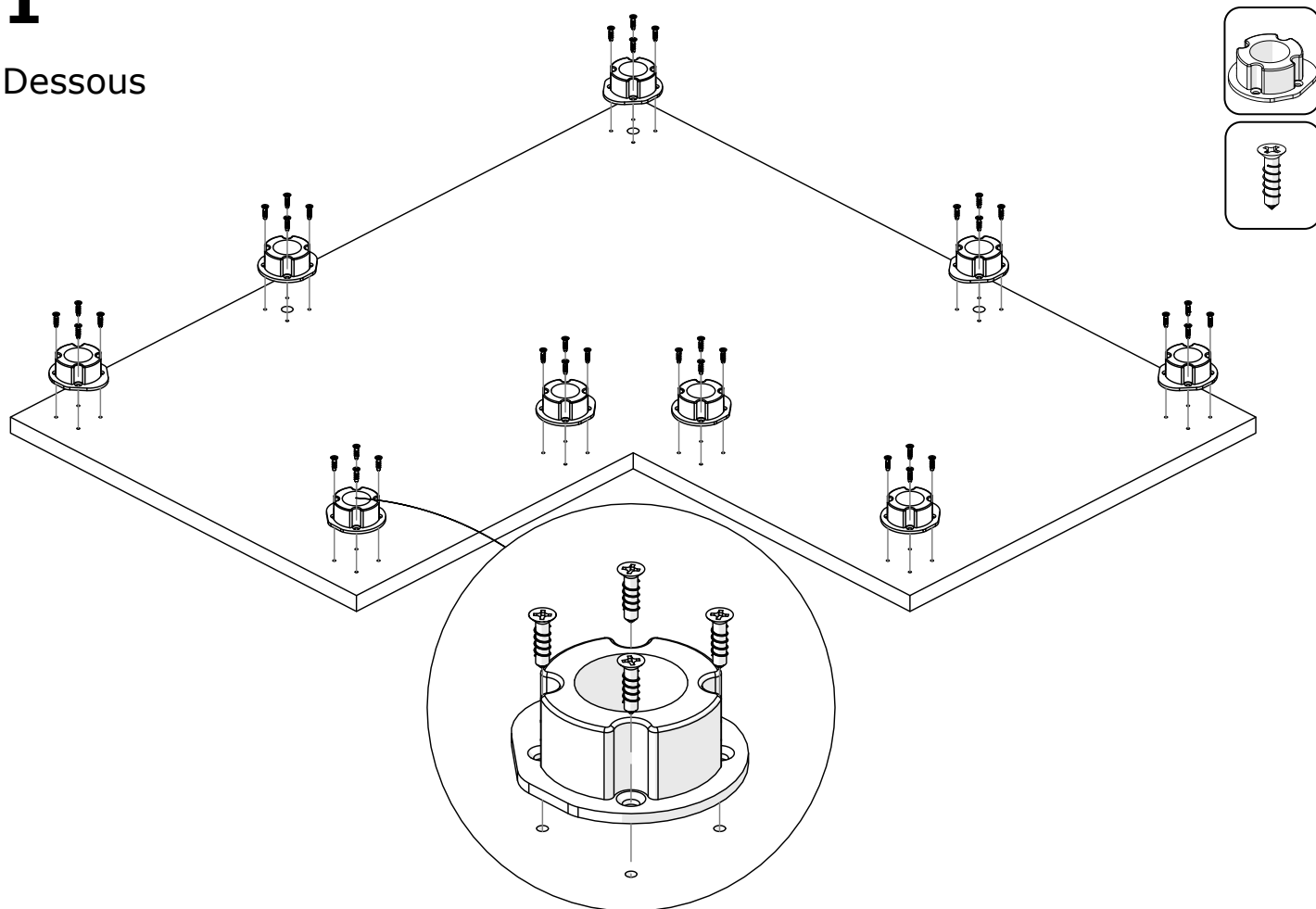
QUINCAILLERIES



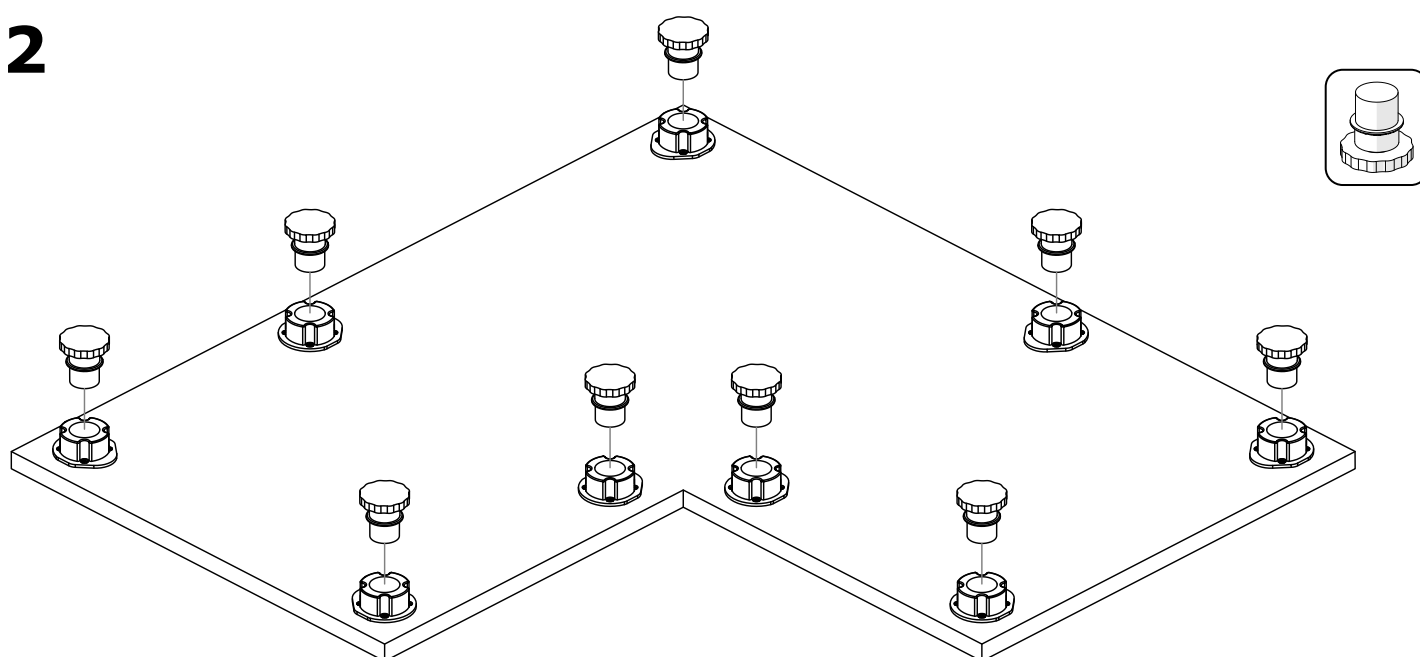
MONTAGE DU CAISSON

1

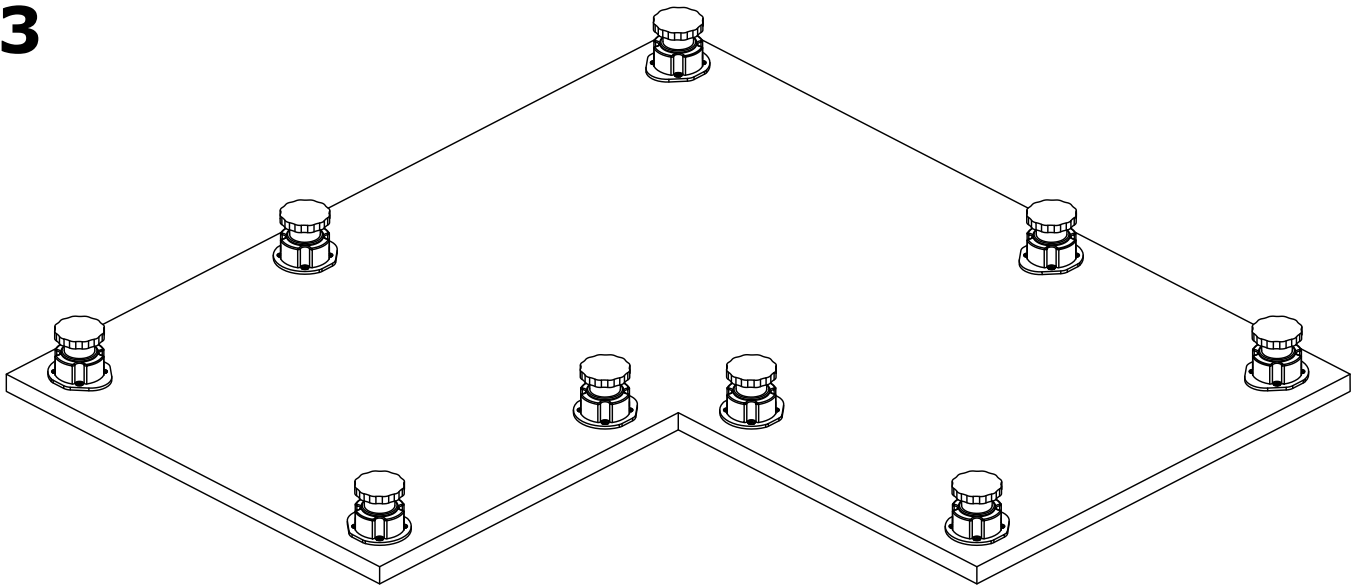
Dessous



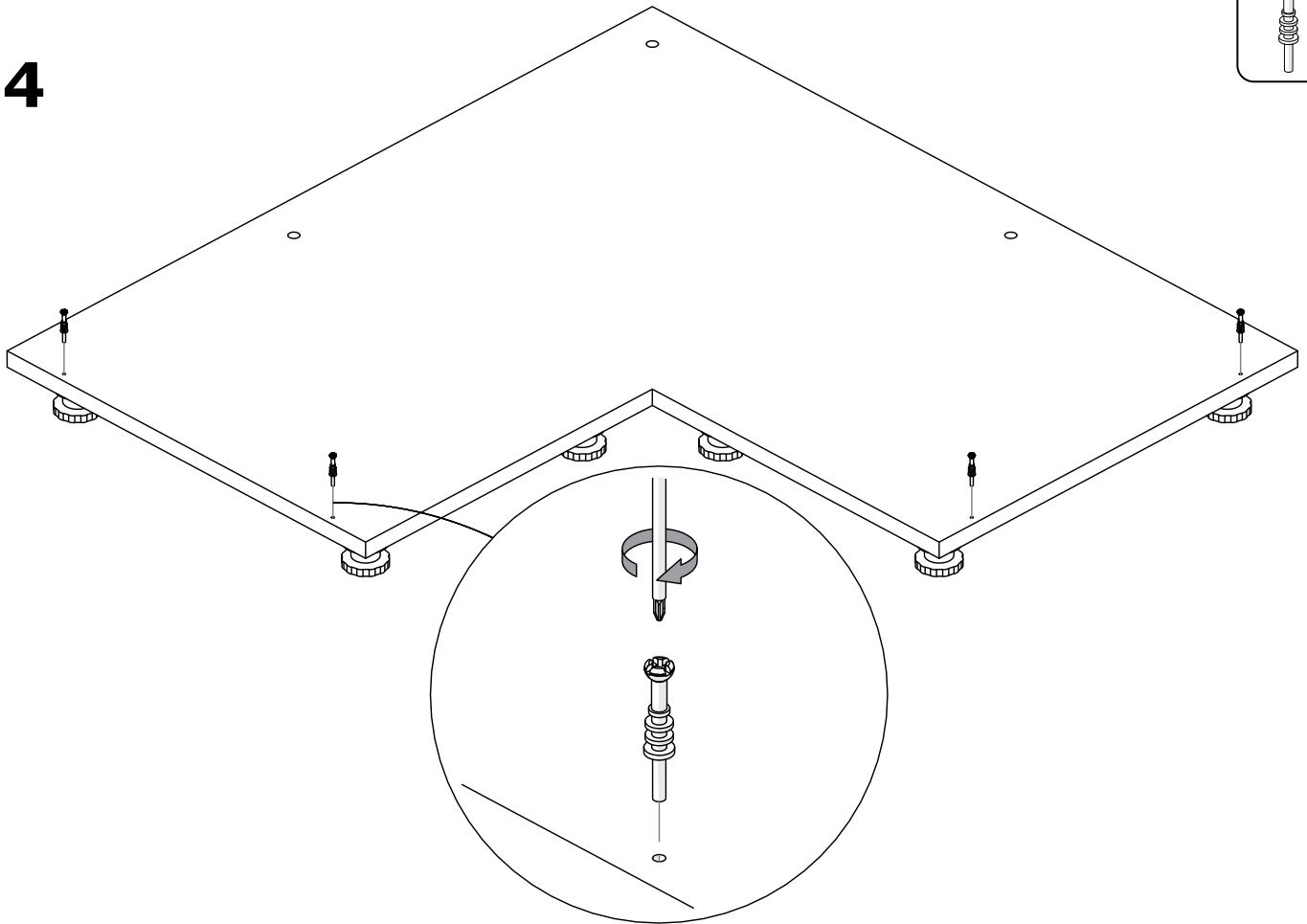
2



3

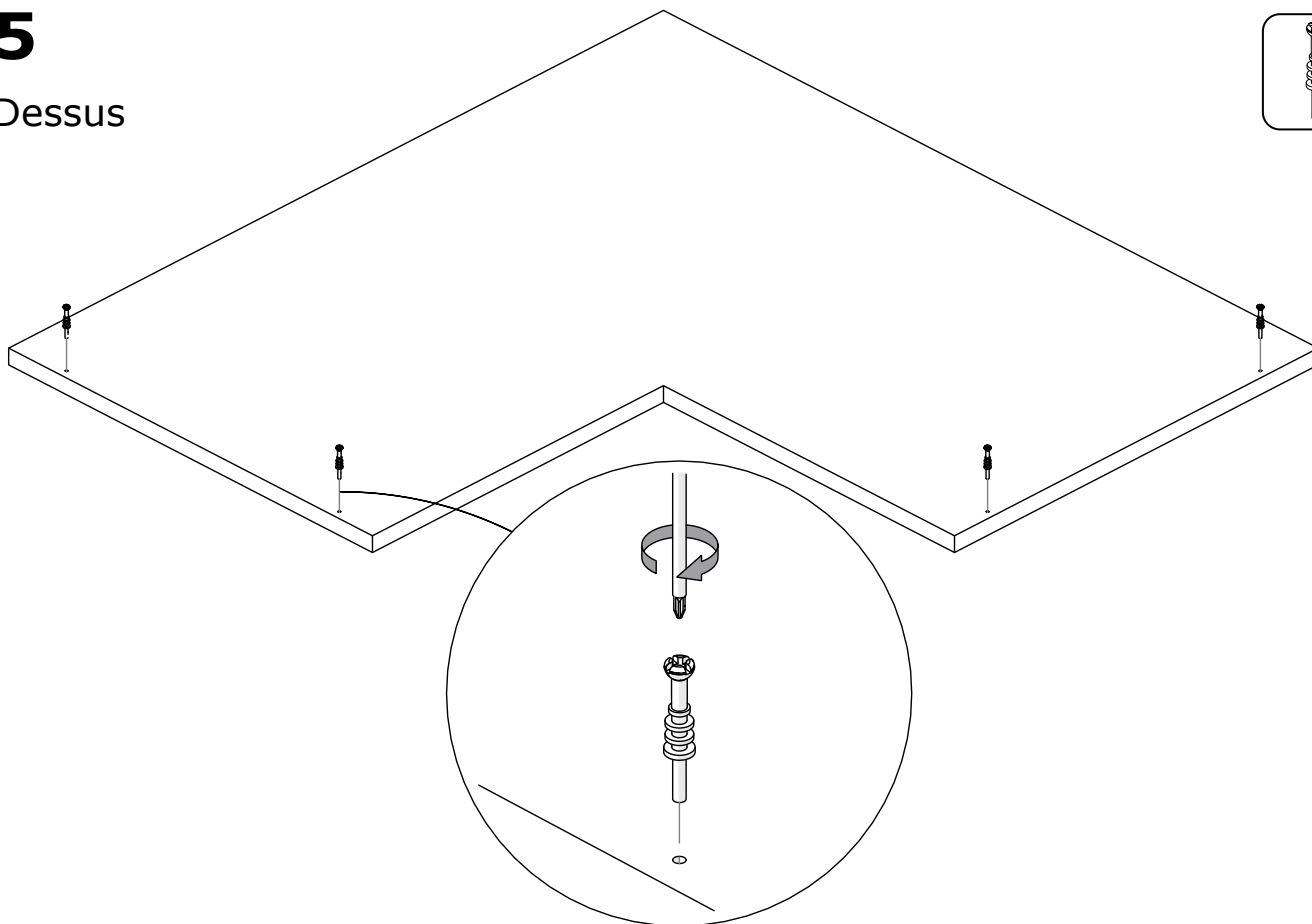
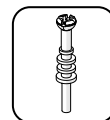


4



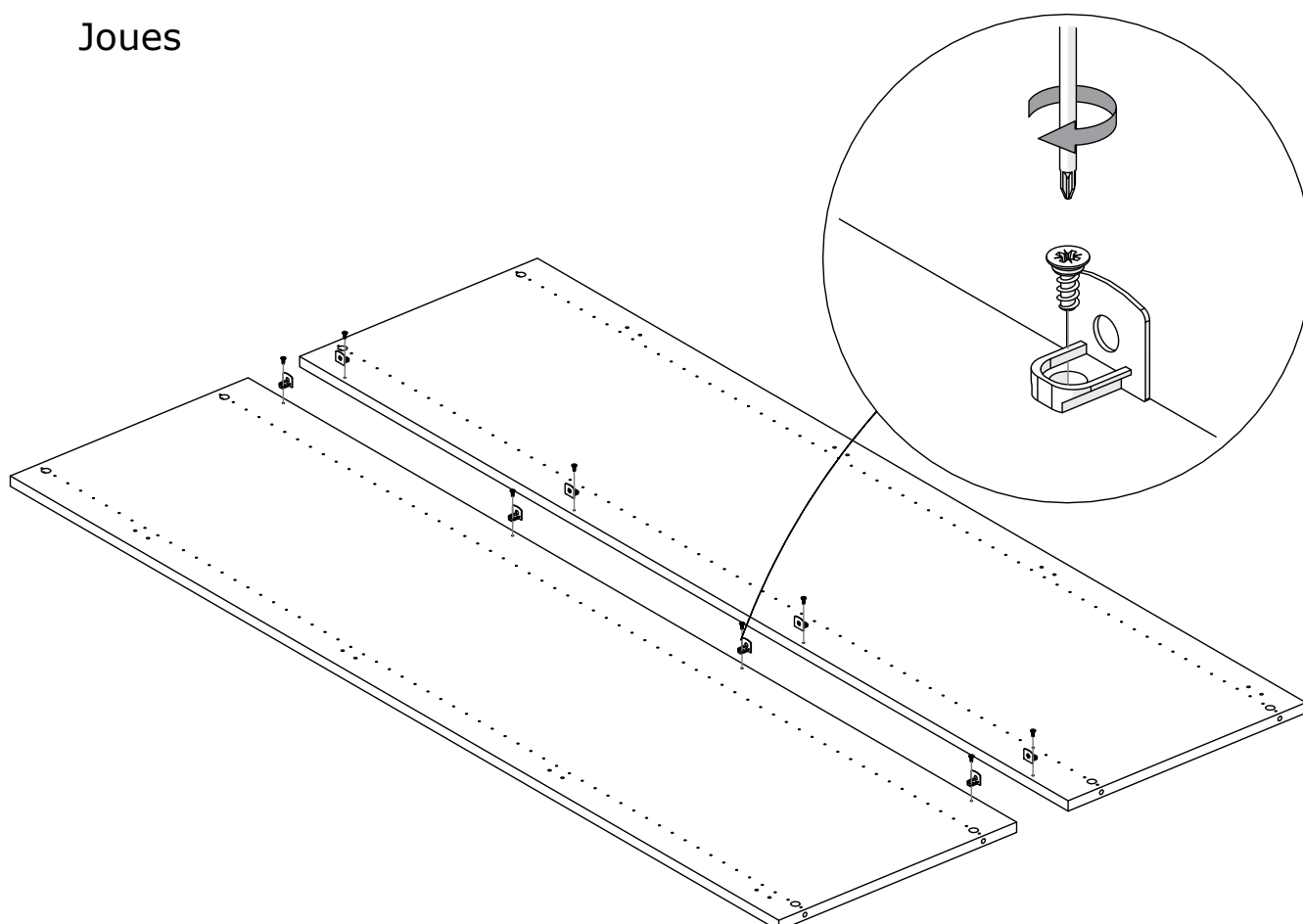
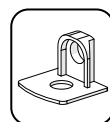
5

Dessus

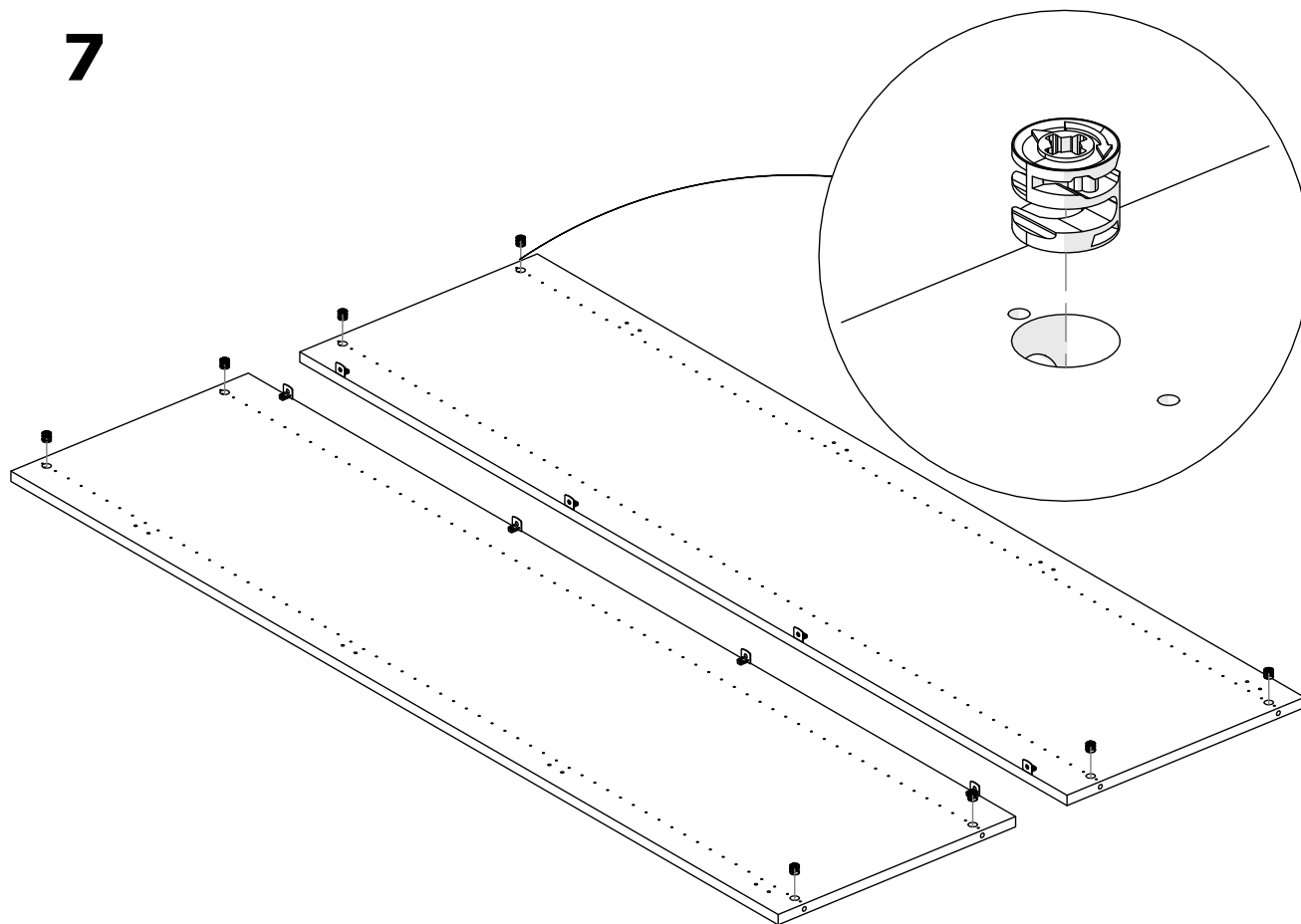


6

Joues

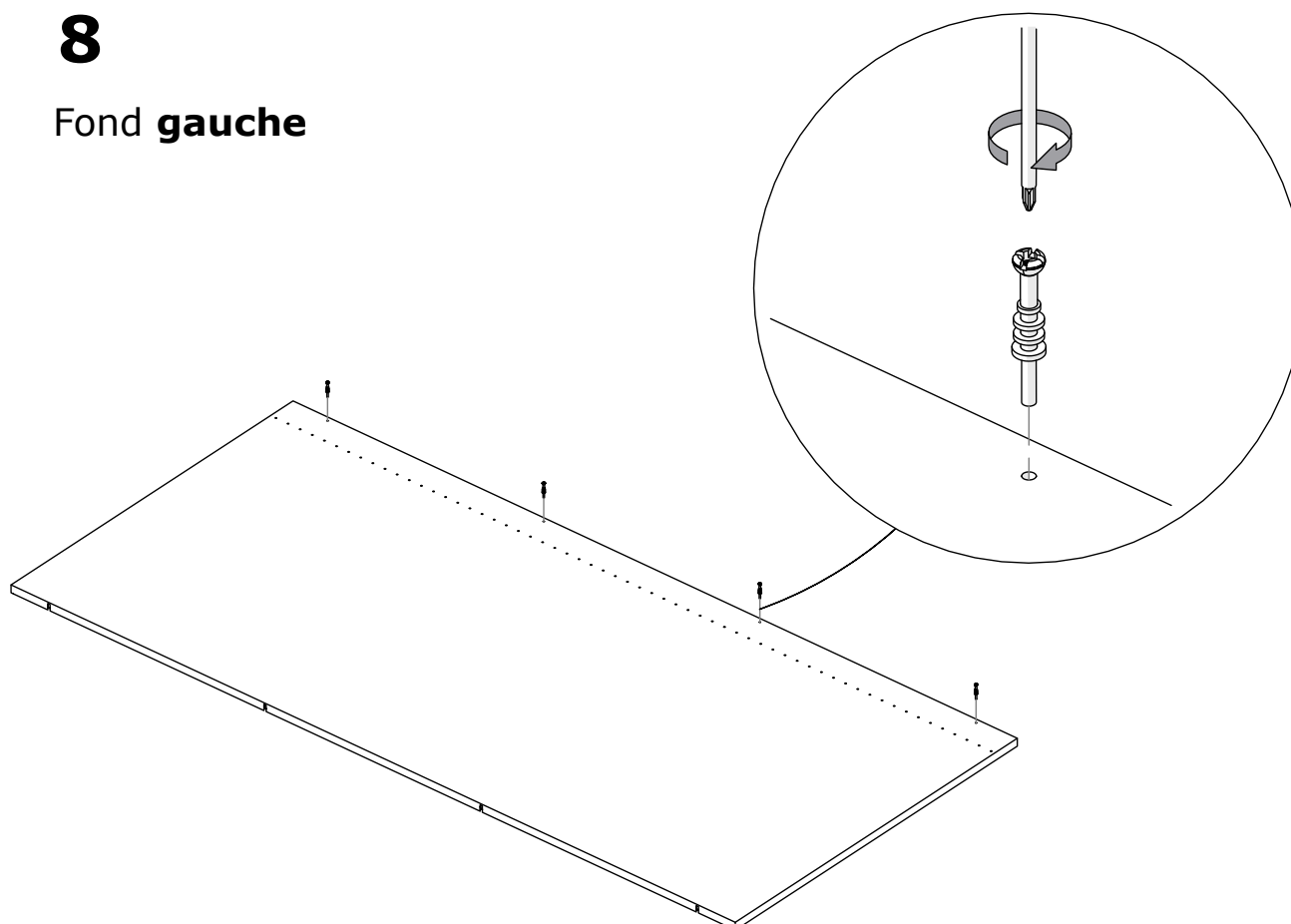


7



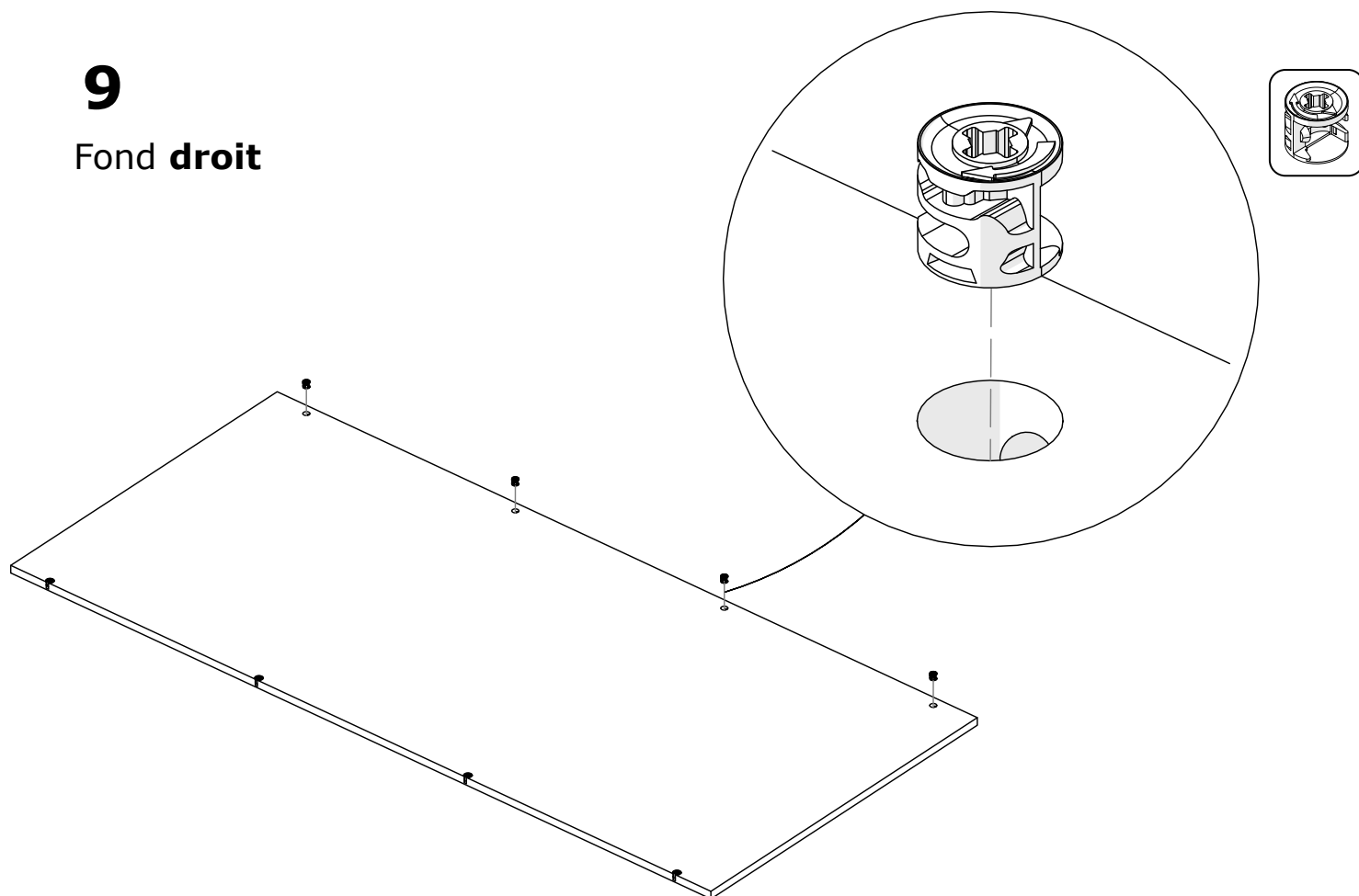
8

Fond **gauche**



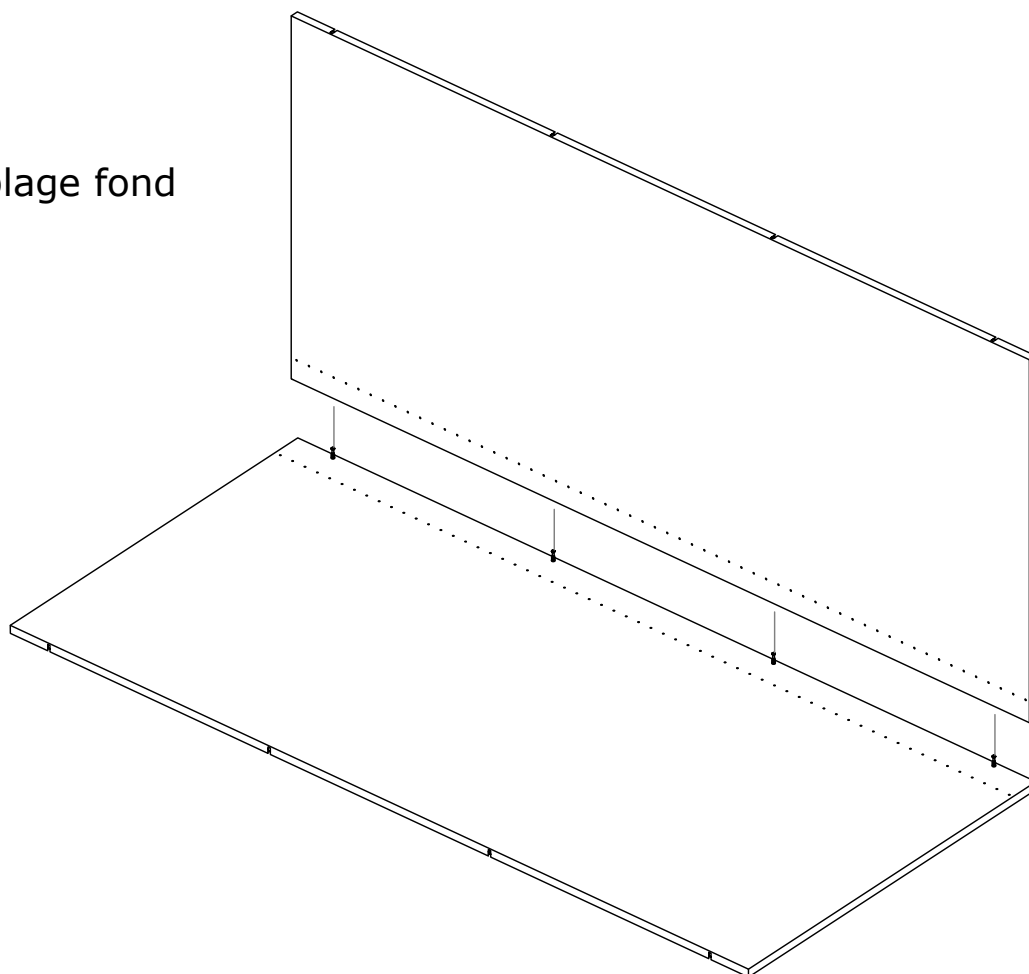
9

Fond **droit**

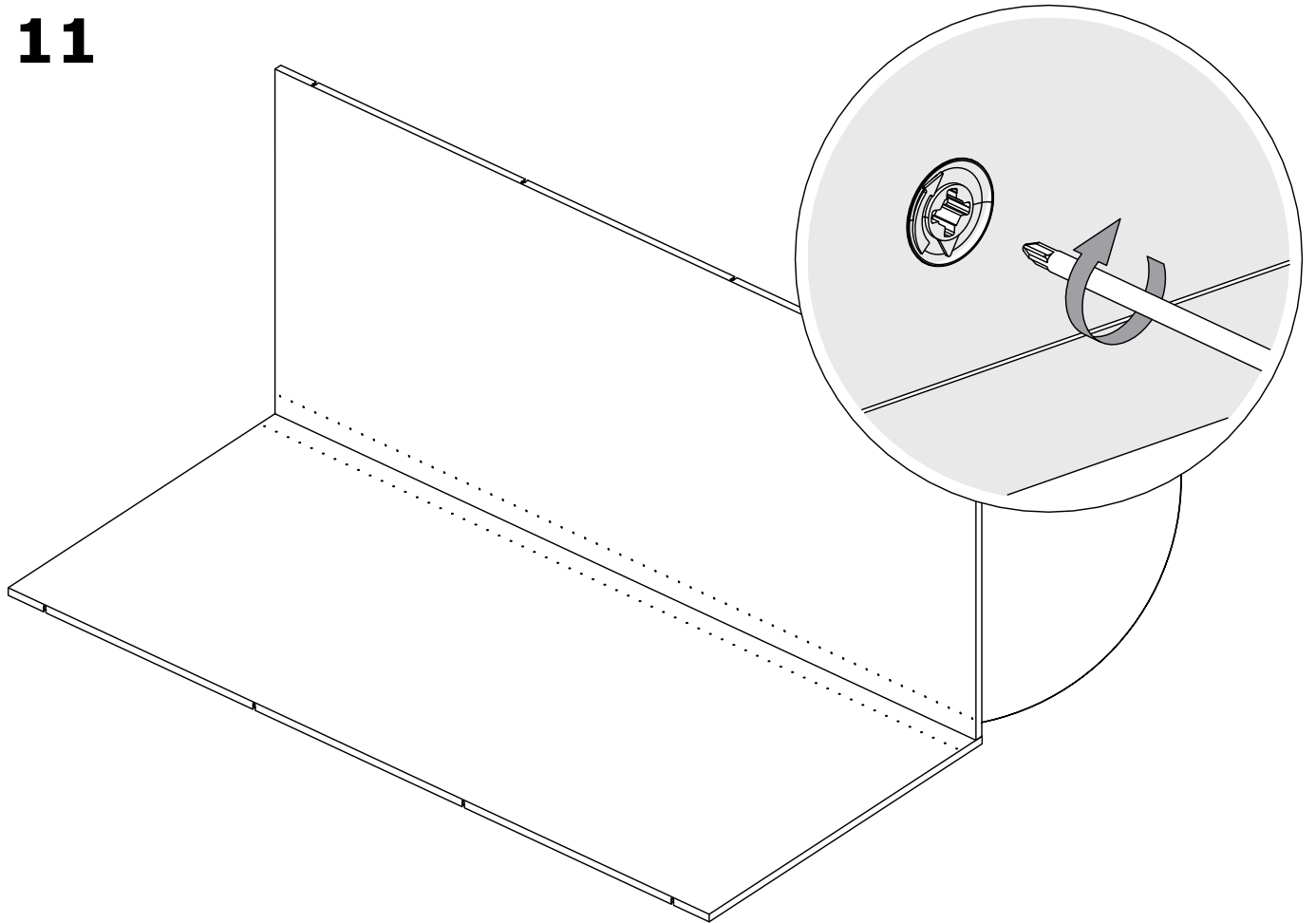


10

Assemblage fond

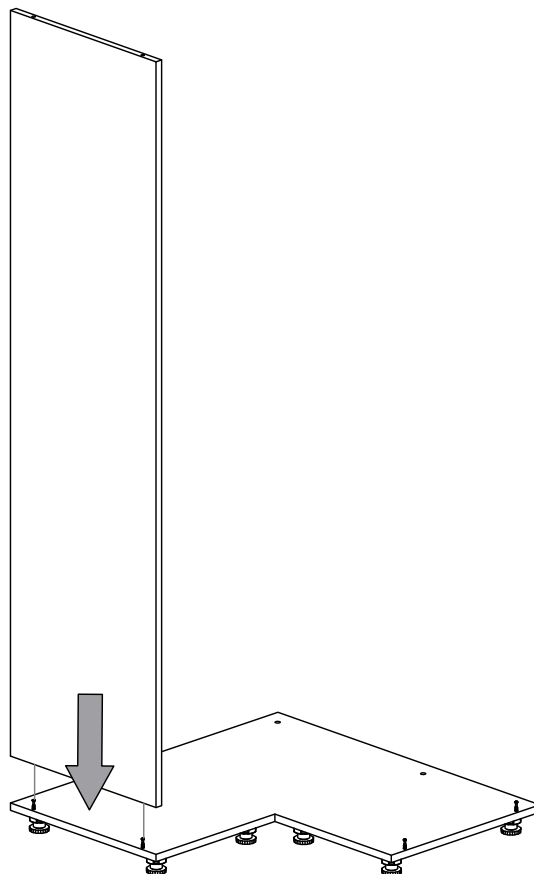


11

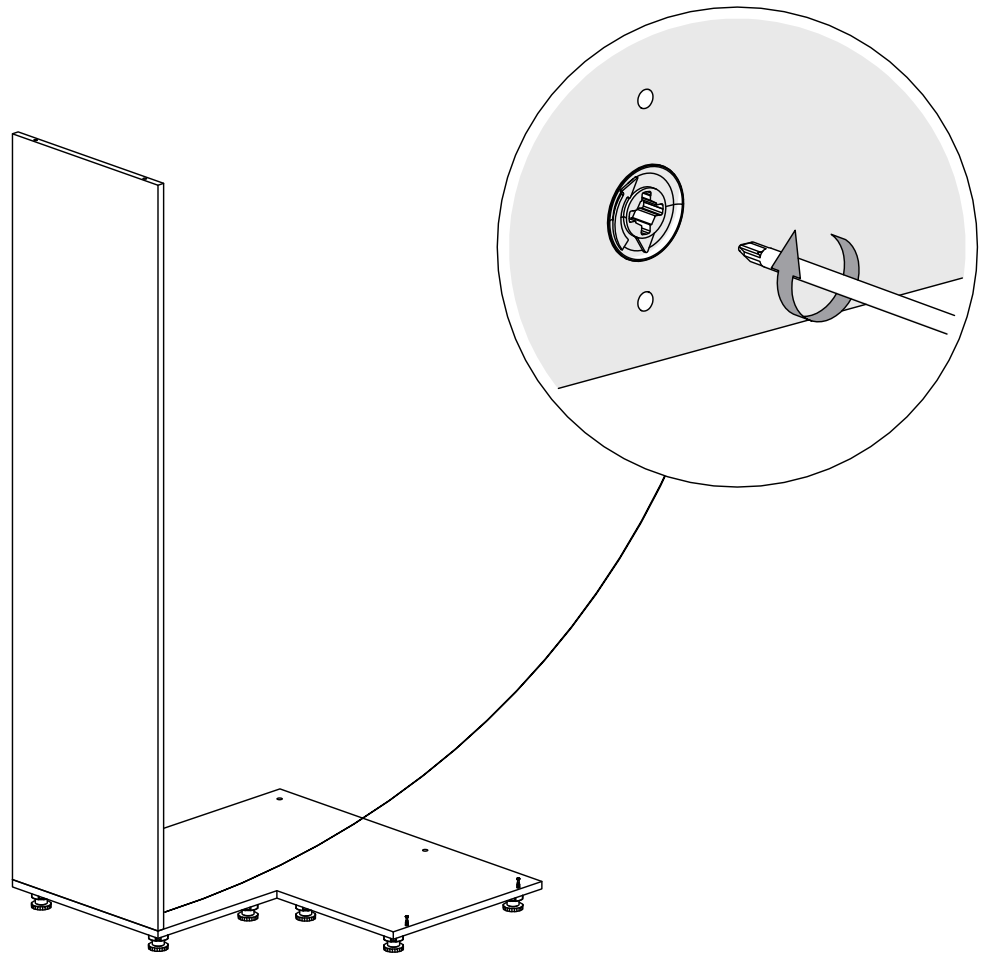


12

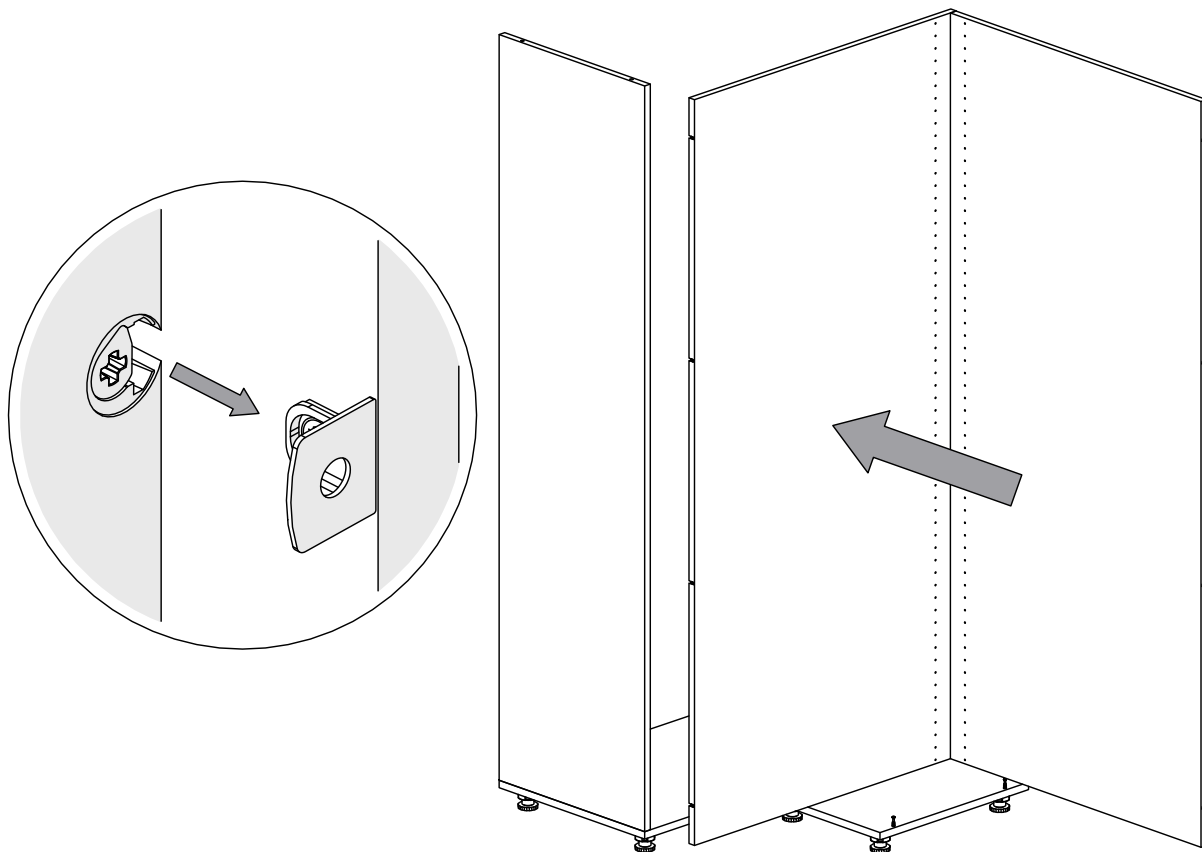
Assemblage
caisson



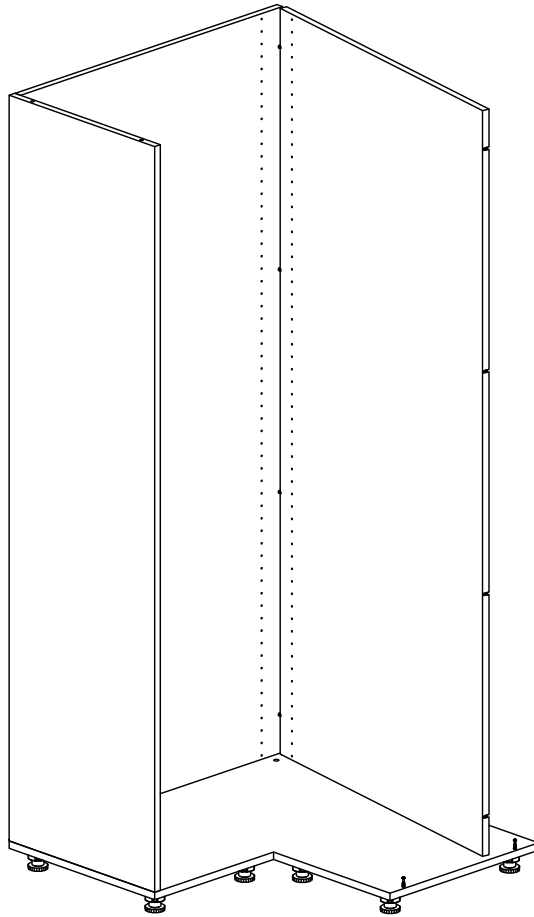
13



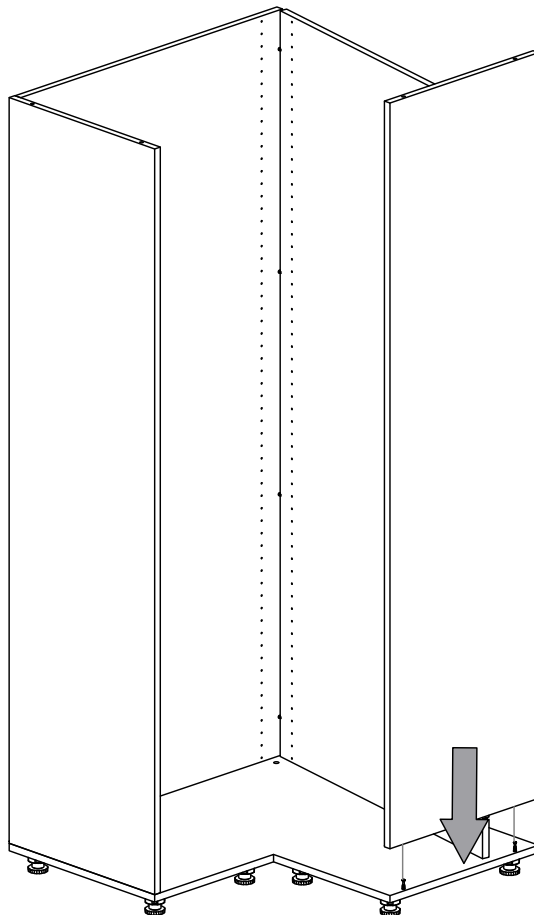
14



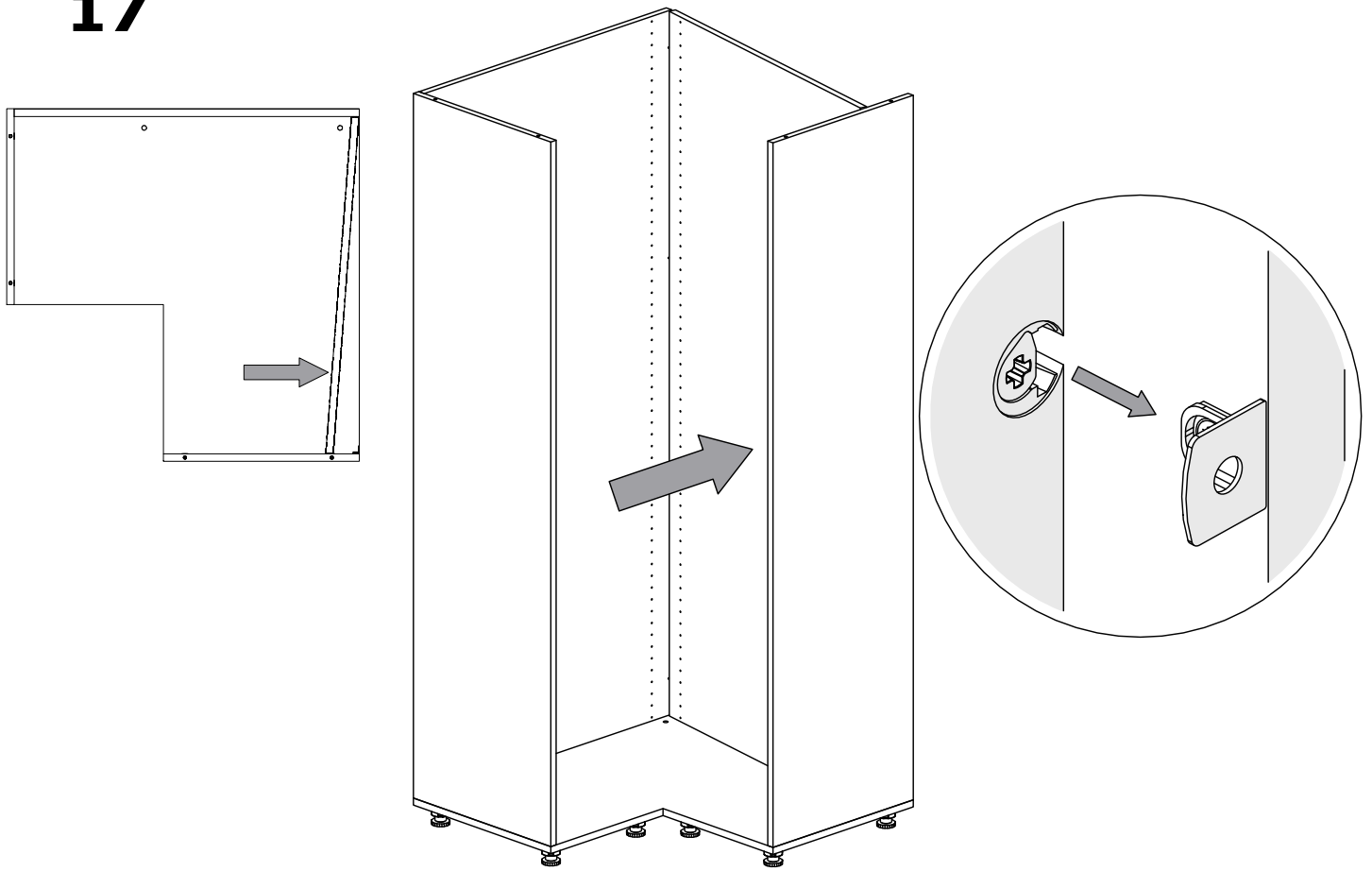
15



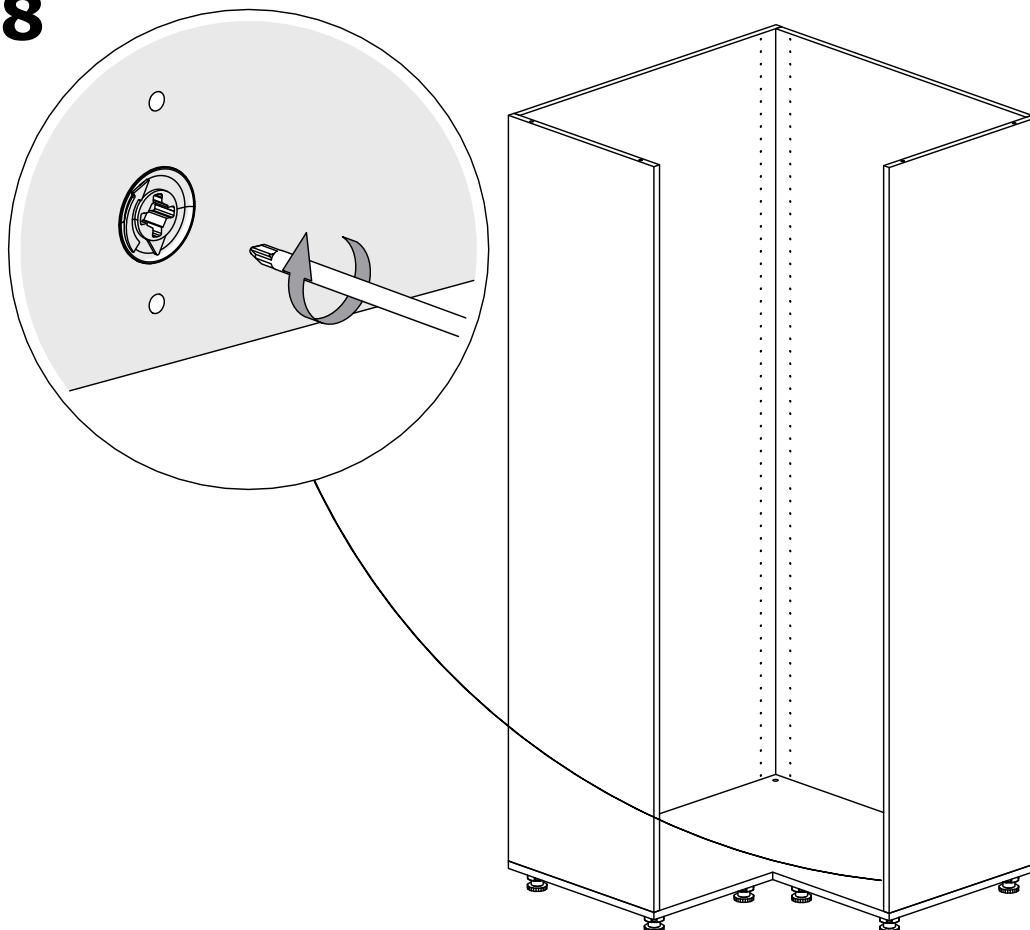
16



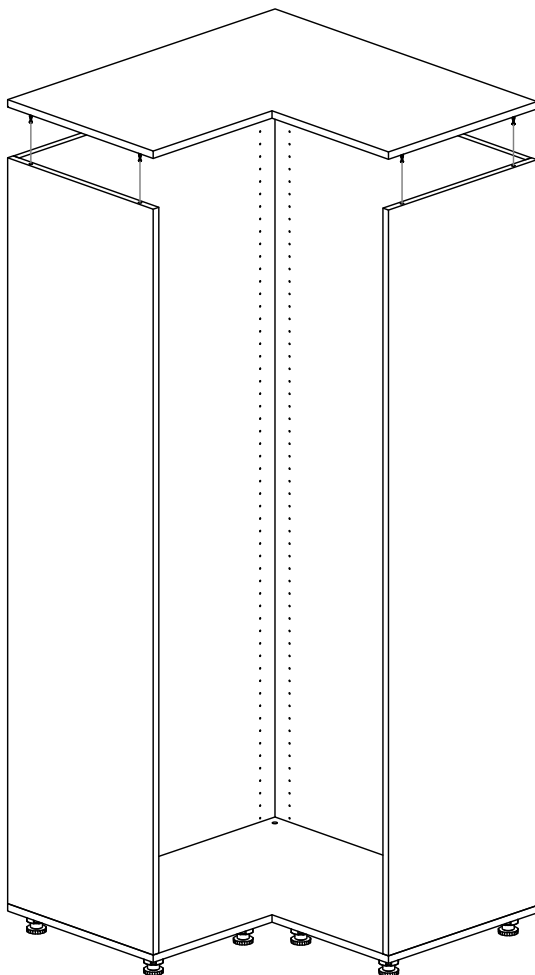
17



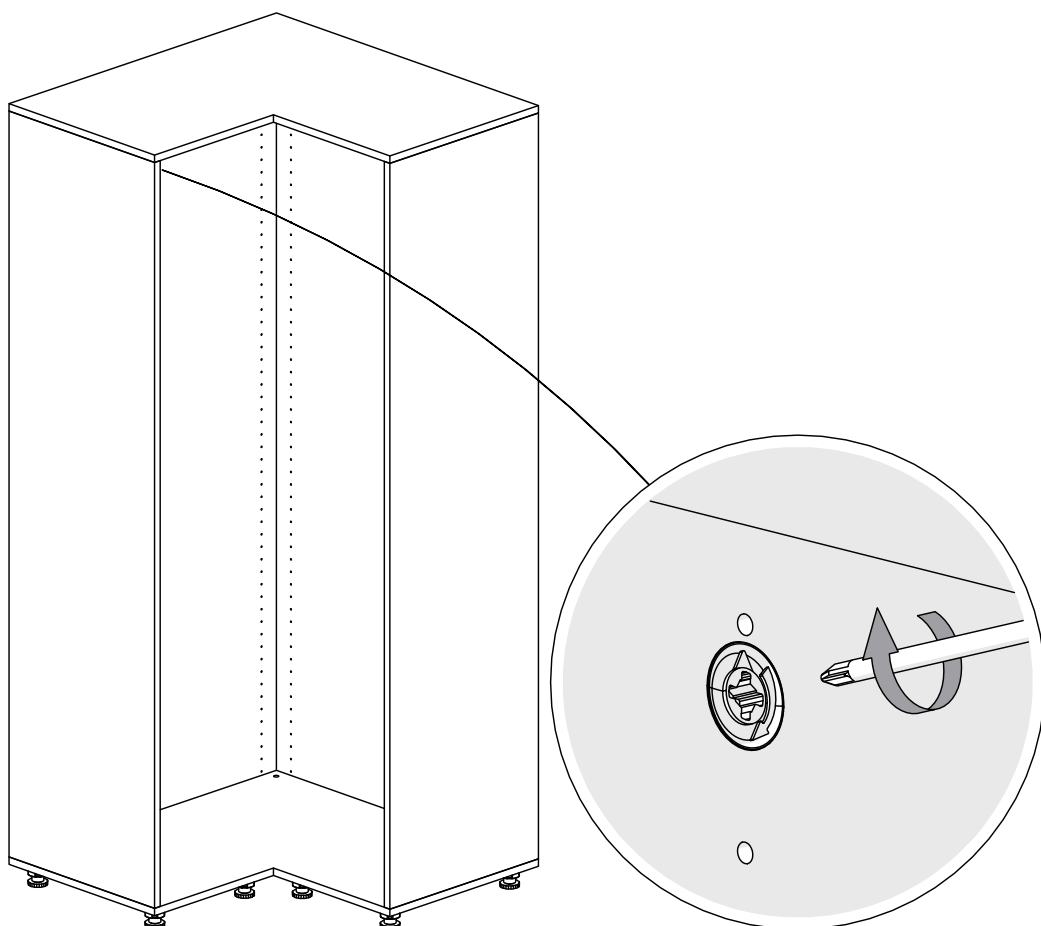
18



19

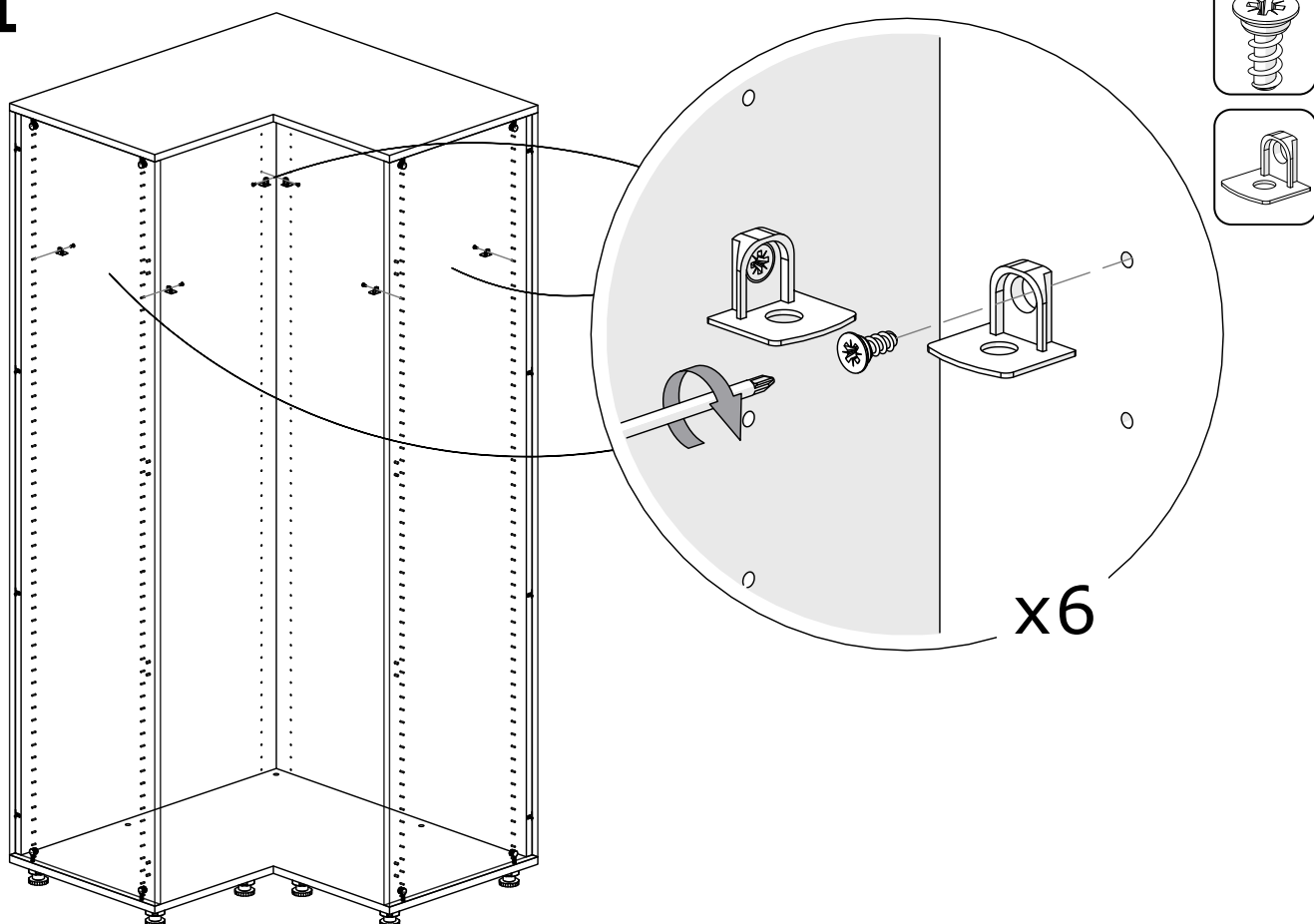


20

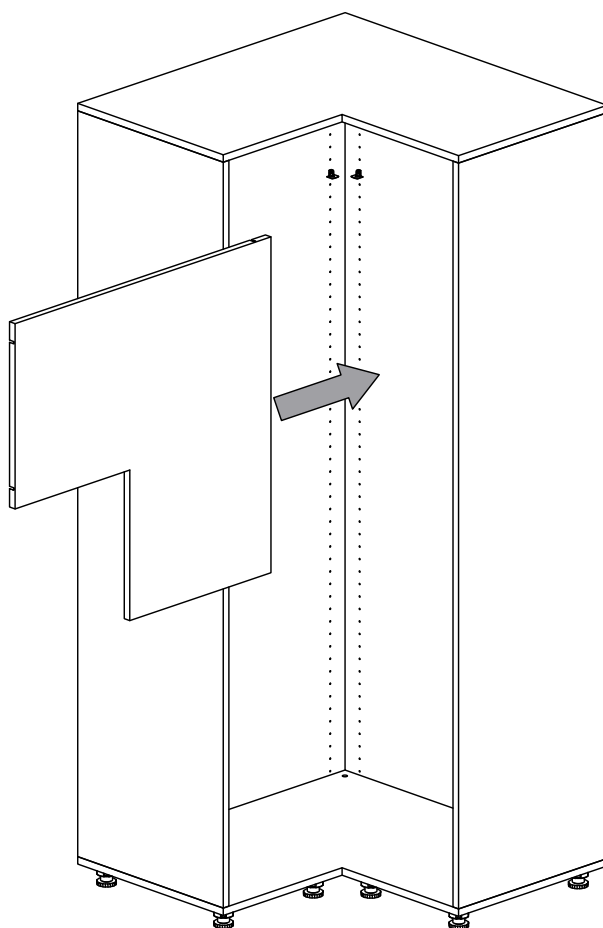


TABLETTE FIXE

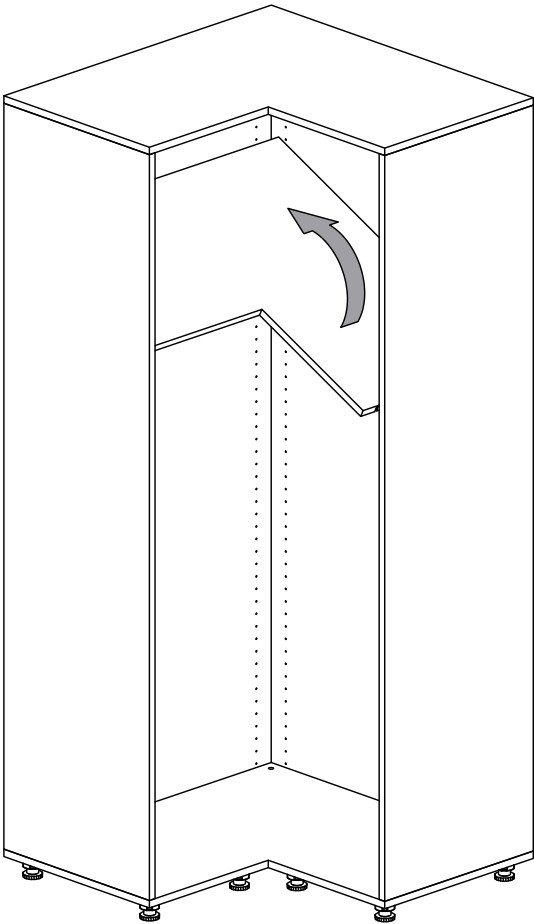
21



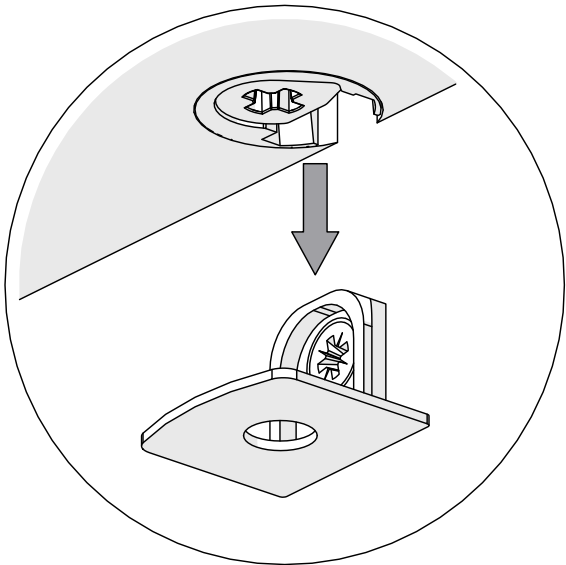
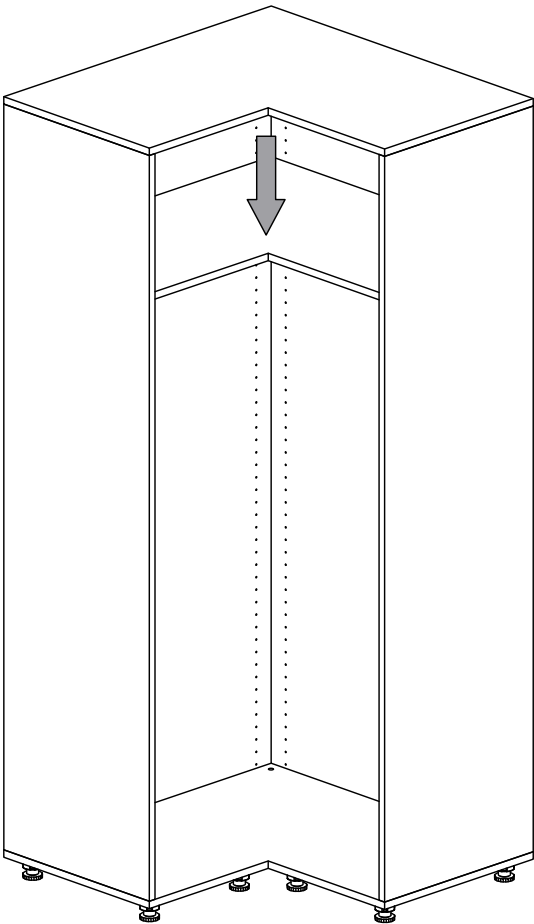
22



23

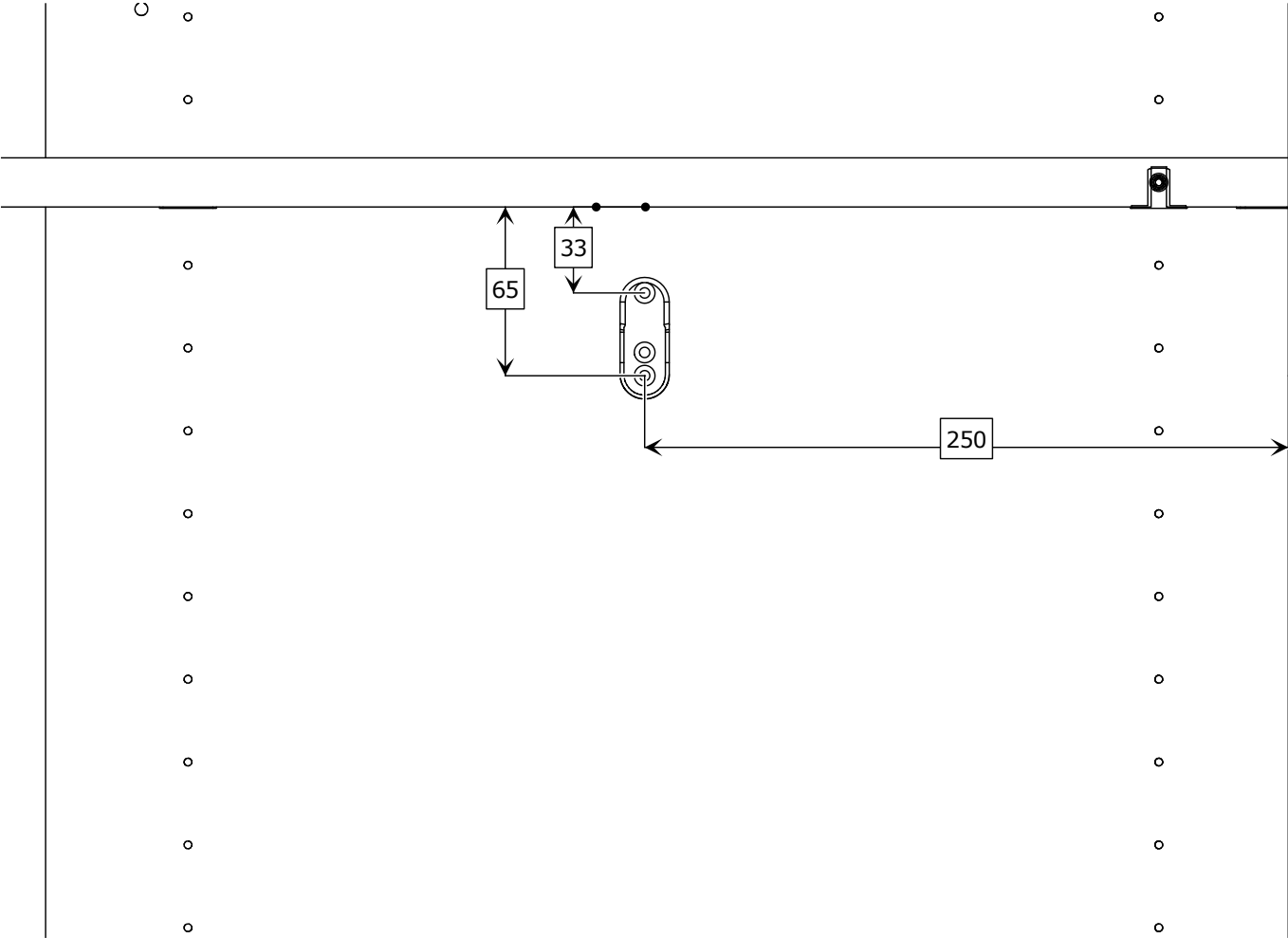
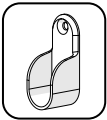
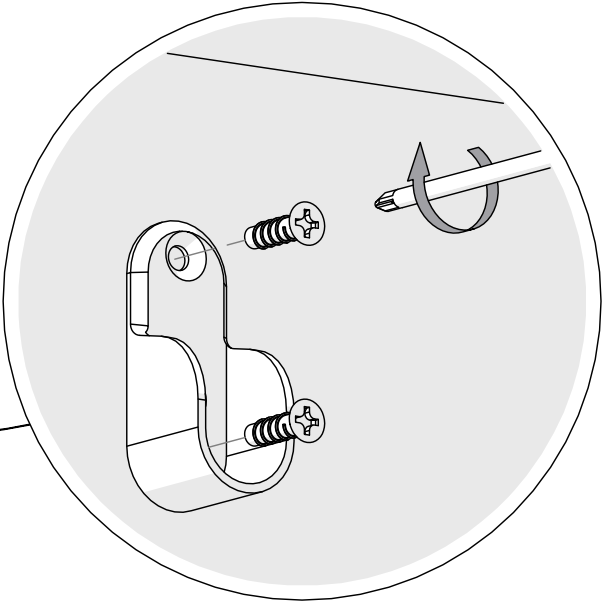
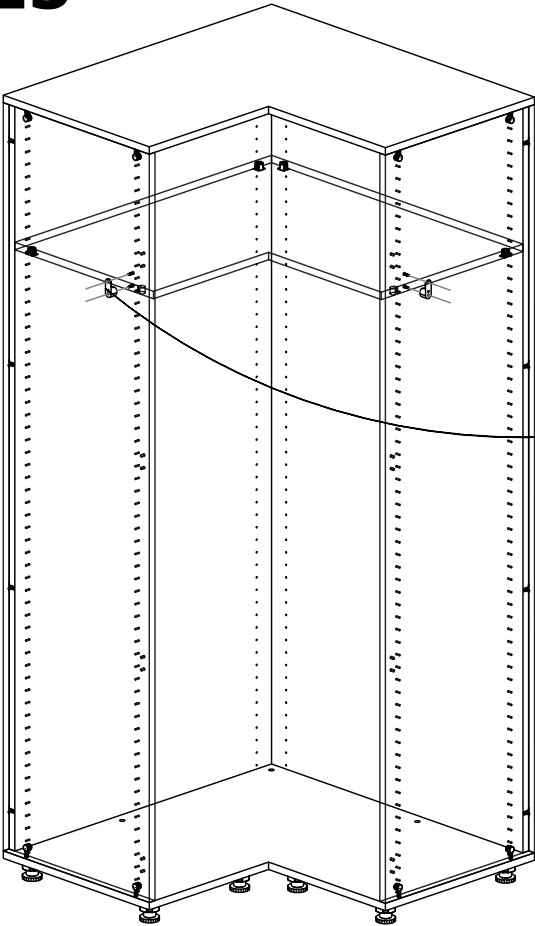


24

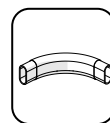
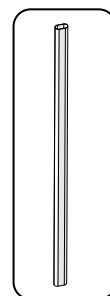
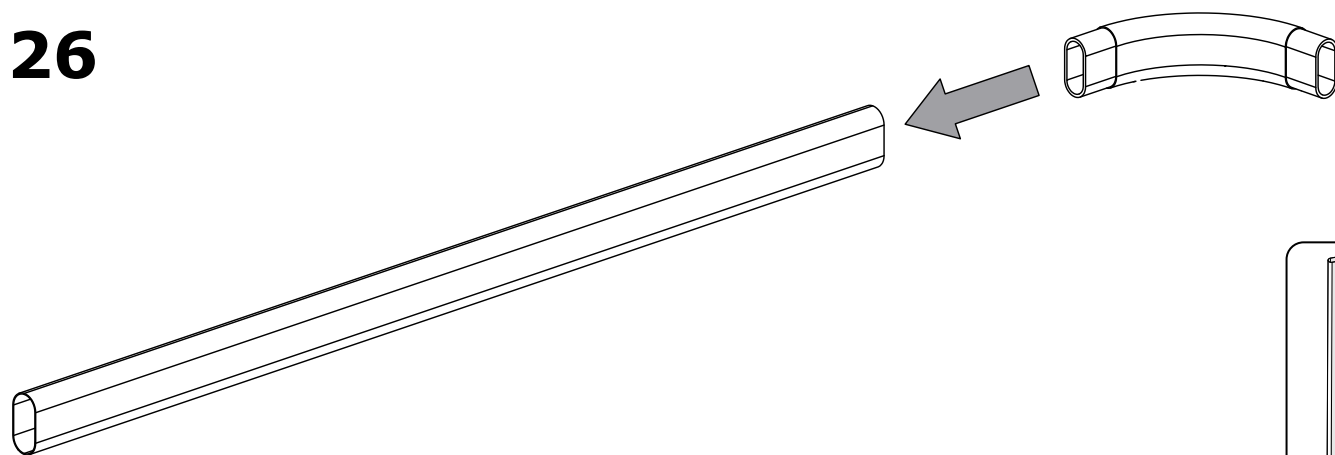


25

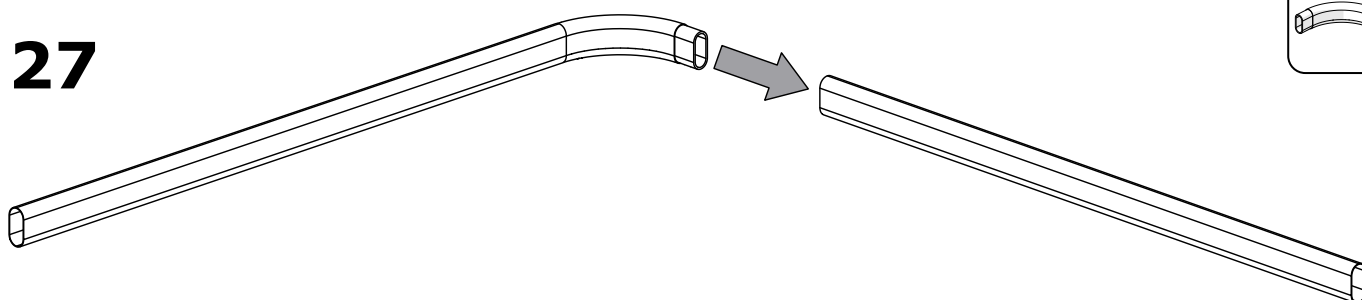
TRINGLE



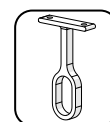
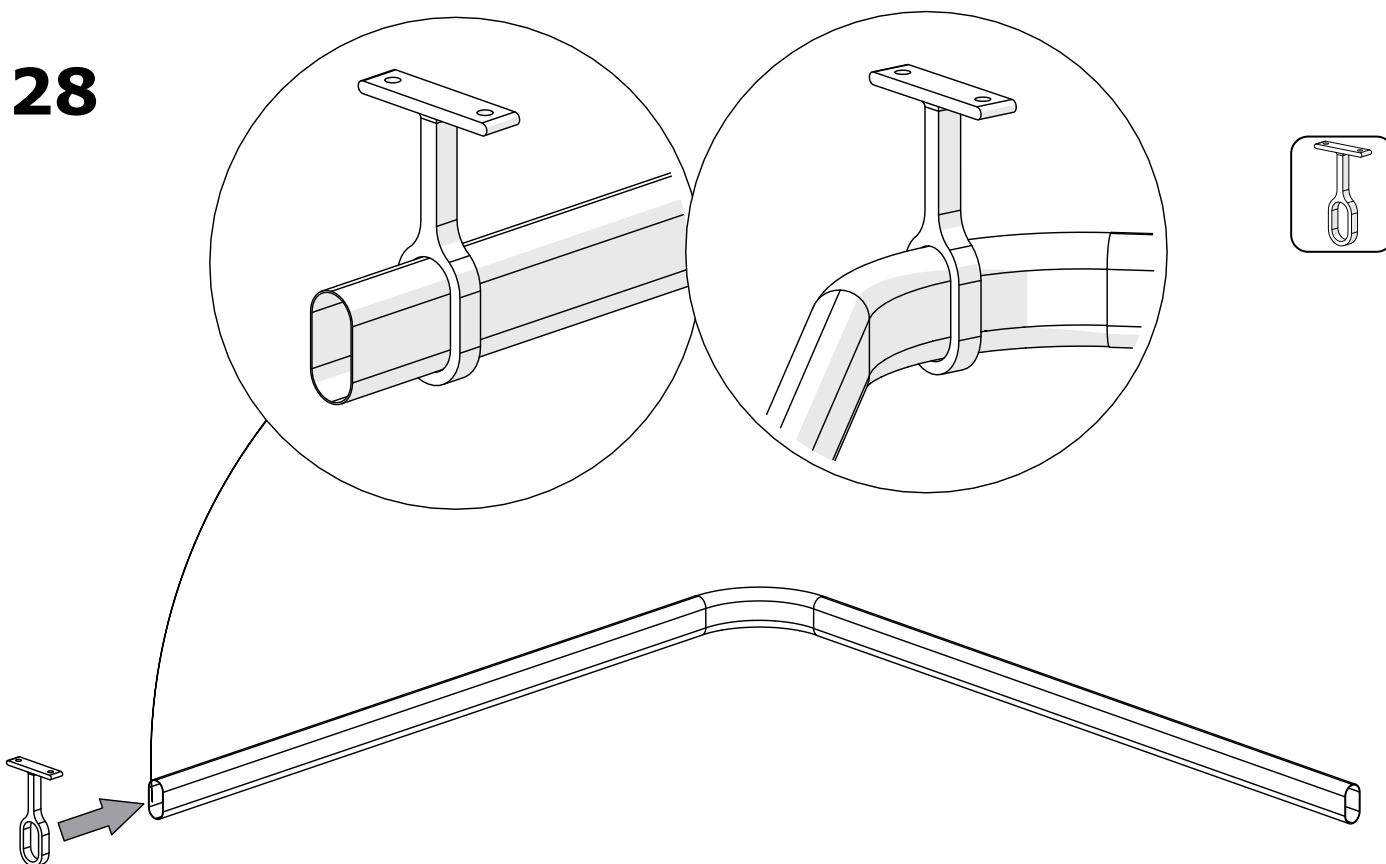
26



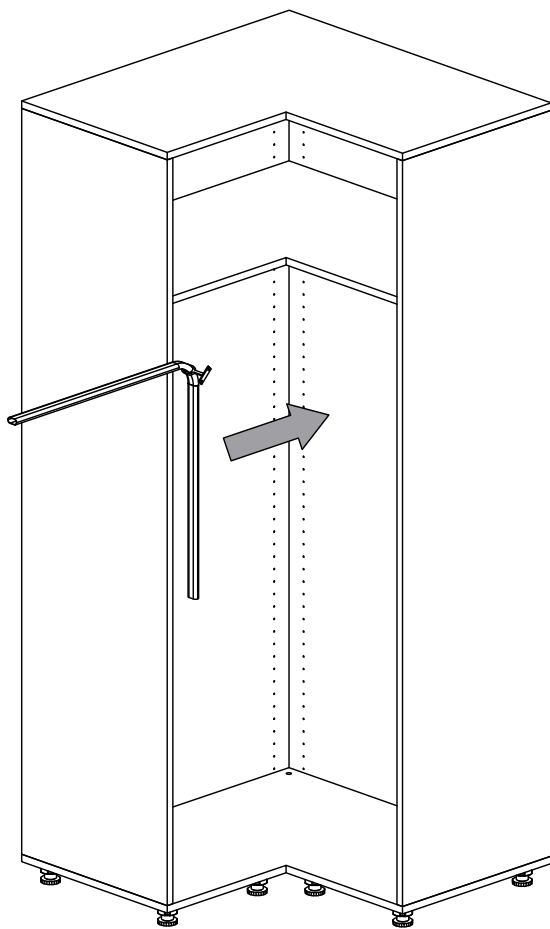
27



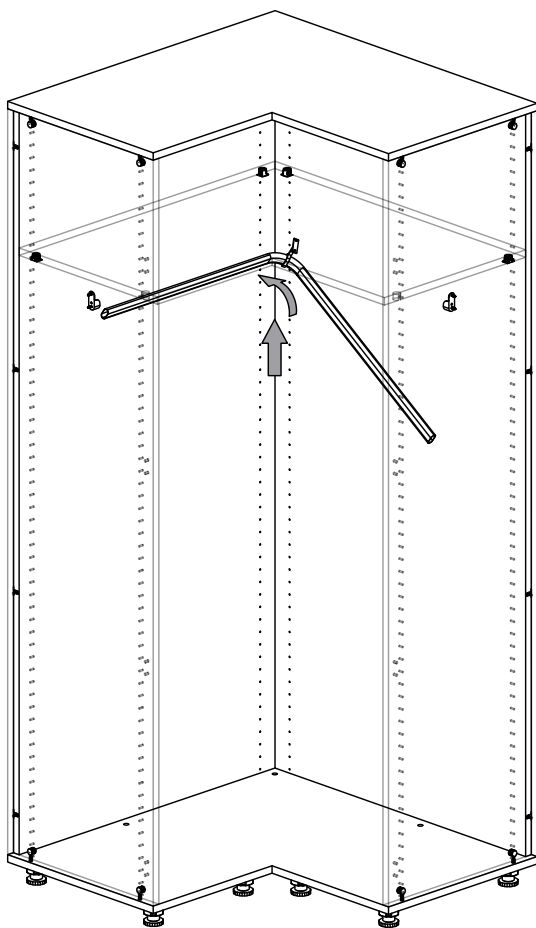
28



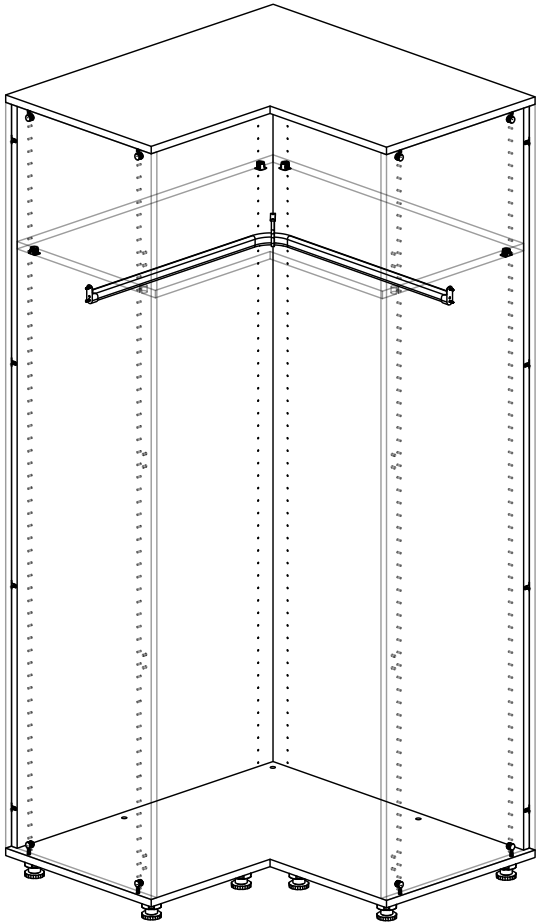
29



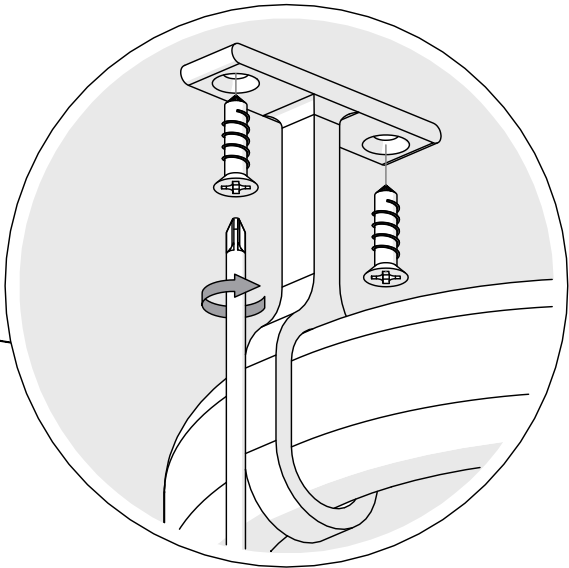
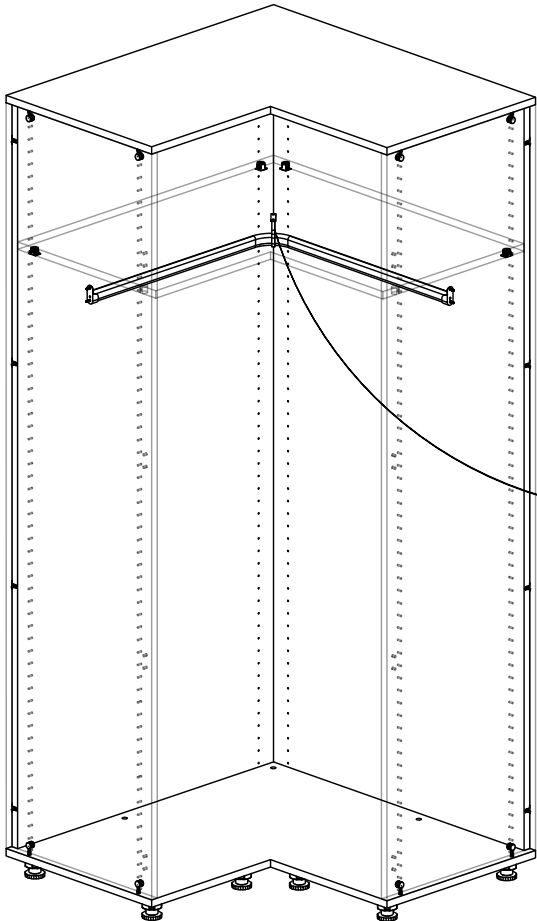
30



31

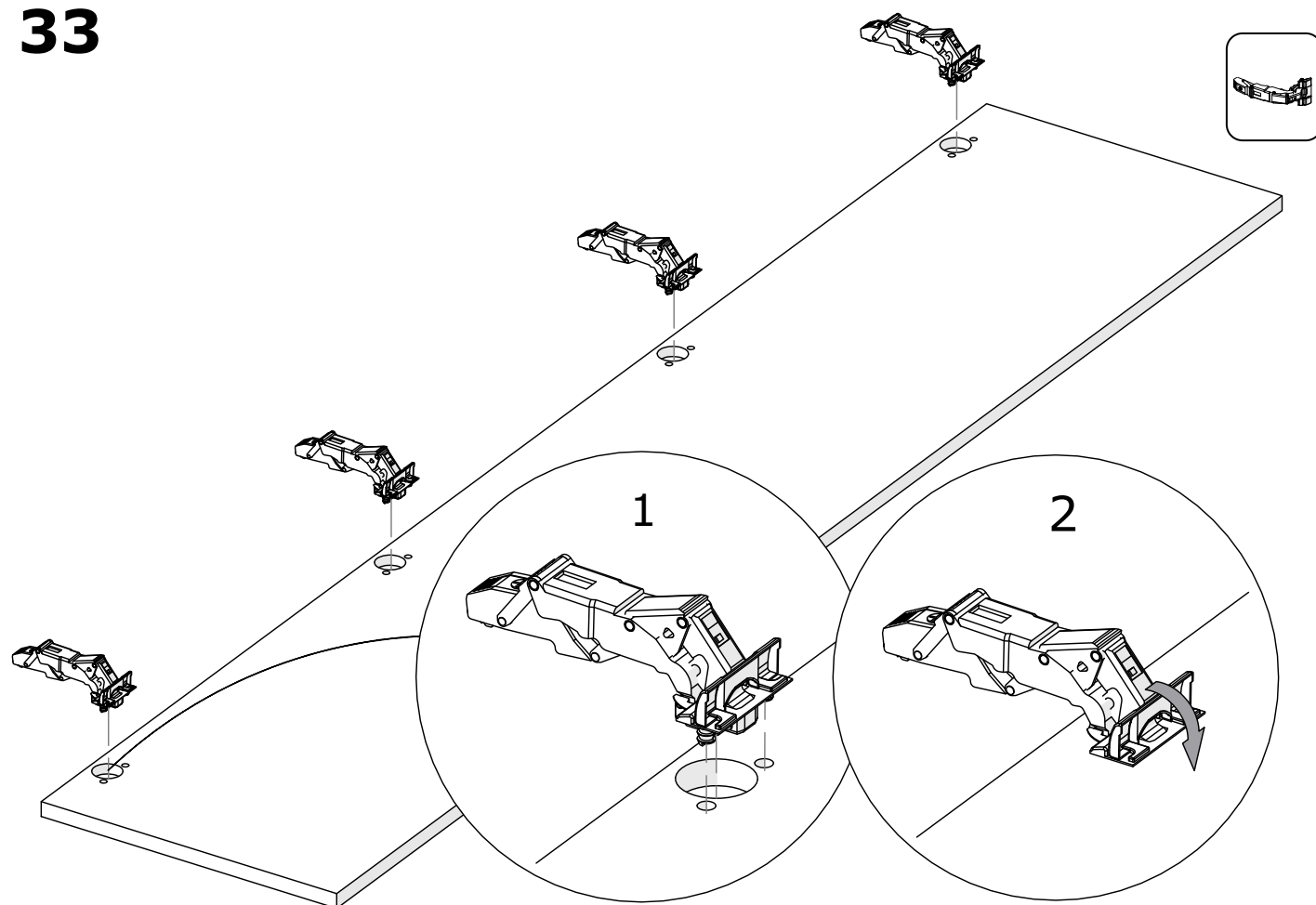


32

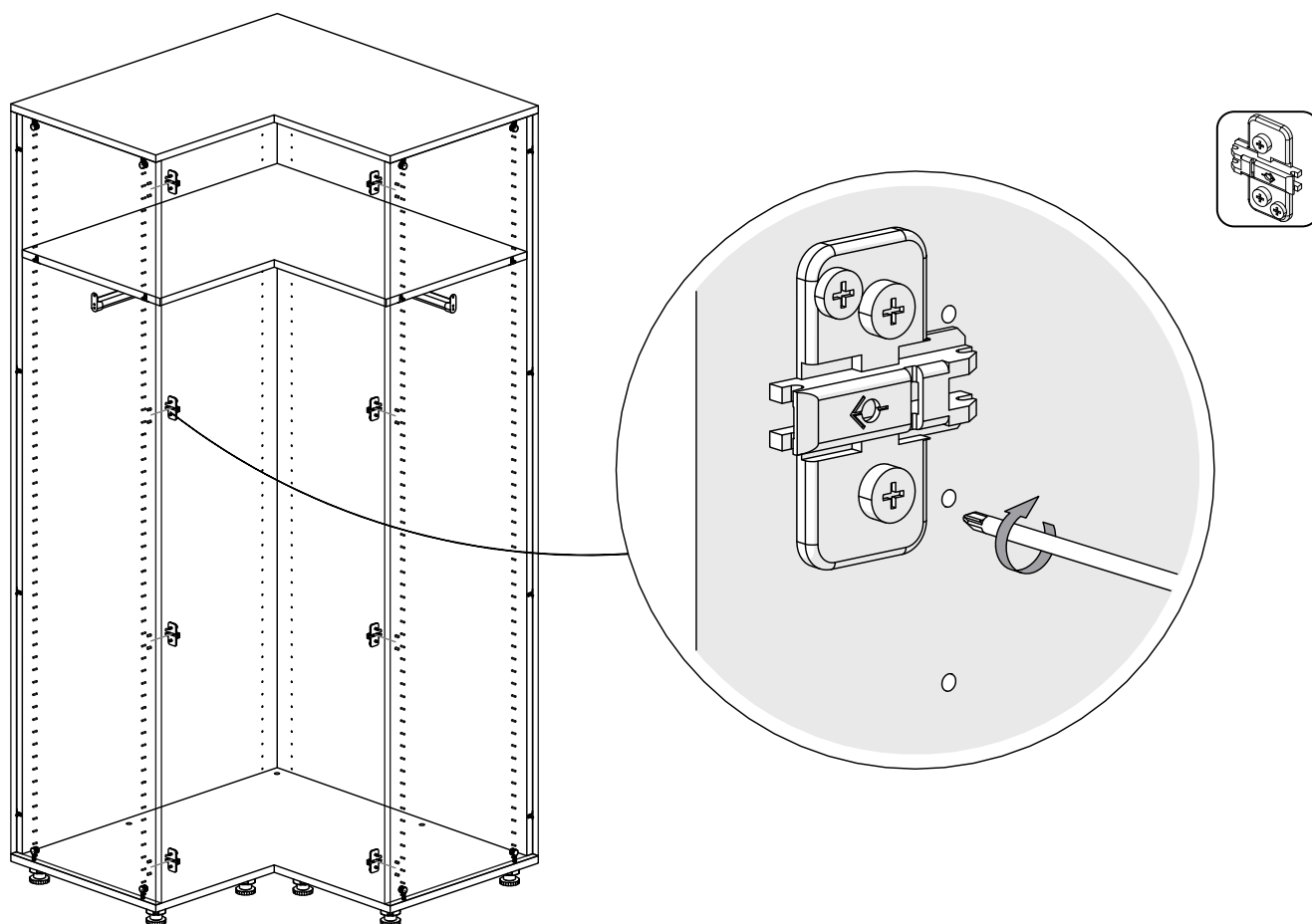


PORTE SUR CHARNIERES (en option)

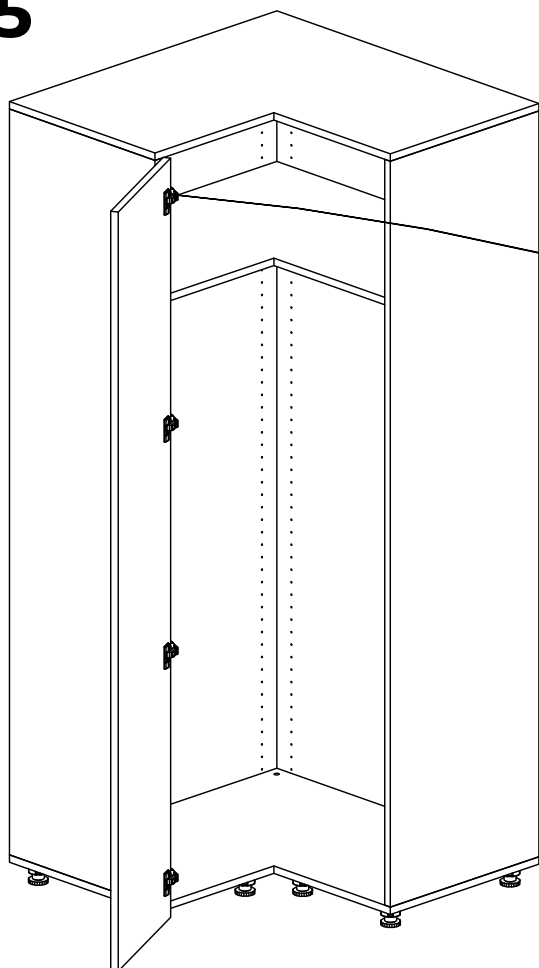
33



34



35



ATTENTION : La porte gauche est plus large que celle de droite

36

